

Winchester District Liberal Democrats

The Guide 2023

'The Liberal Democrats exist to build and safeguard a fair, free and open society, in which we seek to balance the fundamental values of liberty, equality and community, and in which no-one shall be enslaved by poverty, ignorance or conformity'

Preamble to the constitution of the Liberal Democrats

Welcome To Your Local Party

National members are automatically members of their local party - our local party is Winchester District Liberal Democrats (WDL).

We are a very active group with over 600 members from around the District which coincides with the area administered by Winchester City Council (WCC). In 2019, the Lib Dems won control of WCC and have increased their majority since.

In the 2019 General Election, our Winchester Constituency candidate, Paula Ferguson, reduced the Conservative majority from 10,000 (in 2017) to just 985! The seat is one of the Lib Dems' top targets for the next General Election!

These results have inspired more like-minded people to join us in recent years.

Many have gone on to become active members, whether attending one of our varied social events or volunteering in some way.

People are attracted to a Party that has fairness and listening, understanding and responding at its heart. Members and supporters of the Liberal Democrats are contributing to making a difference for the better, for all.



Danny Chambers
Parliamentary Candidate for
Winchester Constituency

Welcome to Winchester District Liberal Democrats

I am incredibly grateful that you decided to join or support the Lib Dems and delighted to welcome you to our friendly, active, and inclusive group of people.

In this guide you will find some background on us as a local party, as well as information about the constituencies, and County and City (District) Council areas where our members live.

You are joining us at a time when we run the City Council. We have a hugely energised team of volunteers that work hard not only to ensure that we are able to enact change through elected representatives, but through local grass roots campaigning.

Aside from the politics, we have a great membership team who are always looking to find new ways of connecting with our members and supporters and through a variety of regular social events and training opportunities.

Our local party operations are run almost entirely by volunteers so please do have a look at the 'Get Involved' section and let us know if you are able to help us out in any way possible.

We are so grateful and appreciative of our members and supporters going above and beyond to ensure that we can continue to fight for liberal values in our local area.

If you have any questions then don't hesitate to contact either myself or the membership team, we will be happy to help out in any way possible.



Vivian Achwal
Chair of Winchester
District Liberal Democrats

Vivian

The Organisation

THE LOCAL PARTY EXECUTIVE: The Exec is responsible for setting the strategic direction and goals of the Local Party. It is elected by members at the Annual General Meeting. The Executive meets every other month and members are welcome to attend. If you are interested in coming along, please email secretary@winld.org.uk.

THE OPERATIONS COMMITTEE: This group is delegated by the Executive to run the Local Party on a day to day basis.

THE CORE CAMPAIGN TEAM: This team run the Local Party's campaigning for local and national elections.

THERE ARE FIVE BRANCHES: Winchester City; Downlands; The Worthys; Alresford & Itchen Valley; and The Meon Valley. The branches are responsible for local member engagement, social events and local fundraising. Each branch is run by its own Branch Committee.



WINCHESTER YOUNG LIBERALS:

This is a group specifically for Winchester Liberal Democrats aged under 30 (www.winld.org.uk/wyl) with its own structure, membership and events. It is open to Young Liberals who study, work or live in the Winchester District.

Find out more by following Winchester Young Liberals on Facebook @winchyoungliberals, Twitter @WinchYLD and Instagram @winchyoungliberals.

	Chair Viv Achwal		Deputy Treasurer Margot Power
	Vice-Chair Andy Adams		Secretary Cam Allinson
	Membership Development Gillie Boddy		Data Officer Richard Eve
	Treasurer Neil Cutler		Diversity & Inclusion Officer Siobhan Barr

DISTRICT EXECUTIVE

YOUR WINCHESTER DISTRICT LIB DEM TEAM

	Winchester Parliamentary Candidate Danny Chambers		Campaign Manager Yvette Riley
	Leader of Winchester City Council Martin Tod		Volunteer Coordinator Charlie Wise

CAMPAIGN TEAM



Getting Involved



The Lib Dems' strength is its members and volunteers. We hope that people will lend a hand in some way and we are always looking to see how we can match members' and volunteers' interests with a way they can help. Every bit of your support contributes to a team that can win elections.

ACTIVITIES: We run a programme of social and campaign activities for our members and supporters

throughout the year. Events range from the fun and informal to lively political debate and campaigning. Regular activities include our monthly Lib Dem drinks, delivery and canvassing action days, fundraising events (we rely on membership fees and donations for **all** our funding), policy forums and admin sessions in the office. The intention is for members to get involved in something they really believe in, make a difference and have some fun!

SUPPORT: There is a whole spectrum of tasks that we rely on volunteers for, ranging from bundling leaflets and stuffing envelopes to writing content and standing for election.



Regular activities and tasks:

SOCIAL EVENTS such as Pizza & Politics, monthly Lib Dem Drinks

POLICY FORUM - create local policy

ACTION DAYS - politics in action

FUNDRAISING EVENTS

SOCIAL MEDIA - keep us up to date

WRITE articles for the press, social media, website and FOCUS newsletters

PHONE banks - help find new members and volunteers

DELIVER our literature - vacancies all over the District, can you help?

ADMINISTRATION and data entry - want to see how local politics is run and work from our office or your home?

DONATE - we rely on donors for **all** our funding

POLITICS FORUM - lively political debate

STUFF ENVELOPES - we do have a machine but it needs supervision!

IDEAS - if you have any good ones, get in touch organiser@windld.org.uk

Around elections and/or yearly:

CANVASS (telephone & door to door) - help get Liberal Democrats elected

DISPLAY - stake boards and posters

CONFERENCES - National & Regional (where all members can vote on policies)

STAND as a local or national candidate

JOIN the Executive - effect change

SURVEY - meet the public

DELIVER - there is lots of extra literature at election time so our regular deliverers need support

ANNUAL fundraising dinner



CONTACT: Many of these activities are coordinated from the Lib Dem

Office, First Floor, Unit E, Bar End Industrial Estate, Bar End Road, Winchester SO23 9NP (01962 868586). The office is staffed by Yvette Riley, our Campaign Manager, and Charlie Wise, our Volunteer Coordinator and a number of brilliant volunteers.

Why not get involved in something you believe in - make a difference and have some fun!

For more information on any of the activities listed, email Charlie Wise at charlie.wise@windld.org.uk. And also join our Facebook groups: Winchester District Lib Dem HQ and Team Danny for Winchester.

Do drop into the office and say hello to Yvette and Charlie.

We are particularly looking for members with financial, fundraising, IT or events organisation skills to help!

Members are invited to attend national and regional conferences where they can vote on policies, and to join the local management team - the Executive, where they will be in a position to make changes and influence the local party's direction and objectives.



Members' stories

We're thrilled that you've joined the Lib Dems and we'd love to know what motivated you to join and all about the things you're interested in.

The Lib Dems' strength is its members and volunteers and we are always looking to see whether we can match member's interests with a way to help out. Every bit of help adds up, however small, and contributes to a team that can win elections and really make a difference.

Adrian Brophy

There's lots of ways to help out. Initially, I just delivered leaflets, but then realised I could probably have more impact by donating professional skills.

I'm a PR consultant and photographer. I helped in the 2019 General Election campaign with **media relations, press releases and taking photos!**

As part of a brilliant team, we significantly increased our positive press coverage locally, while photography let me see politics close up: as well as working with our candidate, Paula, it was lovely to meet so many local people, and photograph Vince Cable, Jo Swinson and Ed Davey along the way!

Then in Spring 2023, I decided to stand for the City Council and was delighted to be elected as a councillor for Badger's Farm and Oliver's Battery.

Whatever you do, volunteering gives you back so much more.

Photography let me see politics close up... it was lovely to meet so many local people, and photograph Vince Cable and Ed Davey along the way!



8

Gillie Boddy

In Spring 2019 I offered to deliver some leaflets. After much encouragement I then had a go at canvassing and found that I not only met lots of interesting, friendly people but I also actually enjoyed doing it!

During the 2019 General Election, I organised our candidate's diary and drove her to meetings. This was a real privilege as I got to know Paula really well and met some amazing individuals working in both the public and private sectors.

I had a go at canvassing and found that I not only met lots of interesting, friendly people but I also actually enjoyed doing it!

2020 saw me organising events including the annual dinner and then various virtual social and political events during the lockdowns.

I was then asked to take on the role of **Membership Development Officer**. This has been very rewarding and I've set in place a number of new initiatives, including this Members' Guide!

Nathan Eve

I first campaigned for the Liberal Democrats during the 2017 General Election while still at Peter Symonds. Subsequently, I've been involved in several local campaigns and the 2019 General Election when I was home from University. I was very proud to support our candidate, Paula, in a campaign that reduced the Conservatives' vote share, with an amazing 12.1% swing.

I've been involved in several local campaigns and the 2019 General Election when I was home from University. I was very proud to support our candidate, Paula.

I feel our Lib-Dem-run council has made really good progress making Winchester a greener, cleaner, and more prosperous place to live and work in and I stood in the Spring 2023 Local Elections being elected as a councillor for St Bartholomew!

Recently, I've been leading the **Winchester Young Liberals**. Apart from University students and those in work under 30, we have several keen under 18s registered. If you know of any under 30s who'd like to get involved, message me on nathanbeve@gmail.com.



9

The Constituencies

Winchester District was split between two constituencies between 2010 and 2023: Winchester and The Meon Valley.

Meon Valley Constituency was created in 2010 by removing some mostly rural wards in and around Bishop's Waltham from the Winchester Constituency.

In return, Winchester gained two wards in Eastleigh Borough; Chandler's Ford and Hiltingbury.

The Winchester seat is one of the Lib Dems' top target seats for the next General Election.

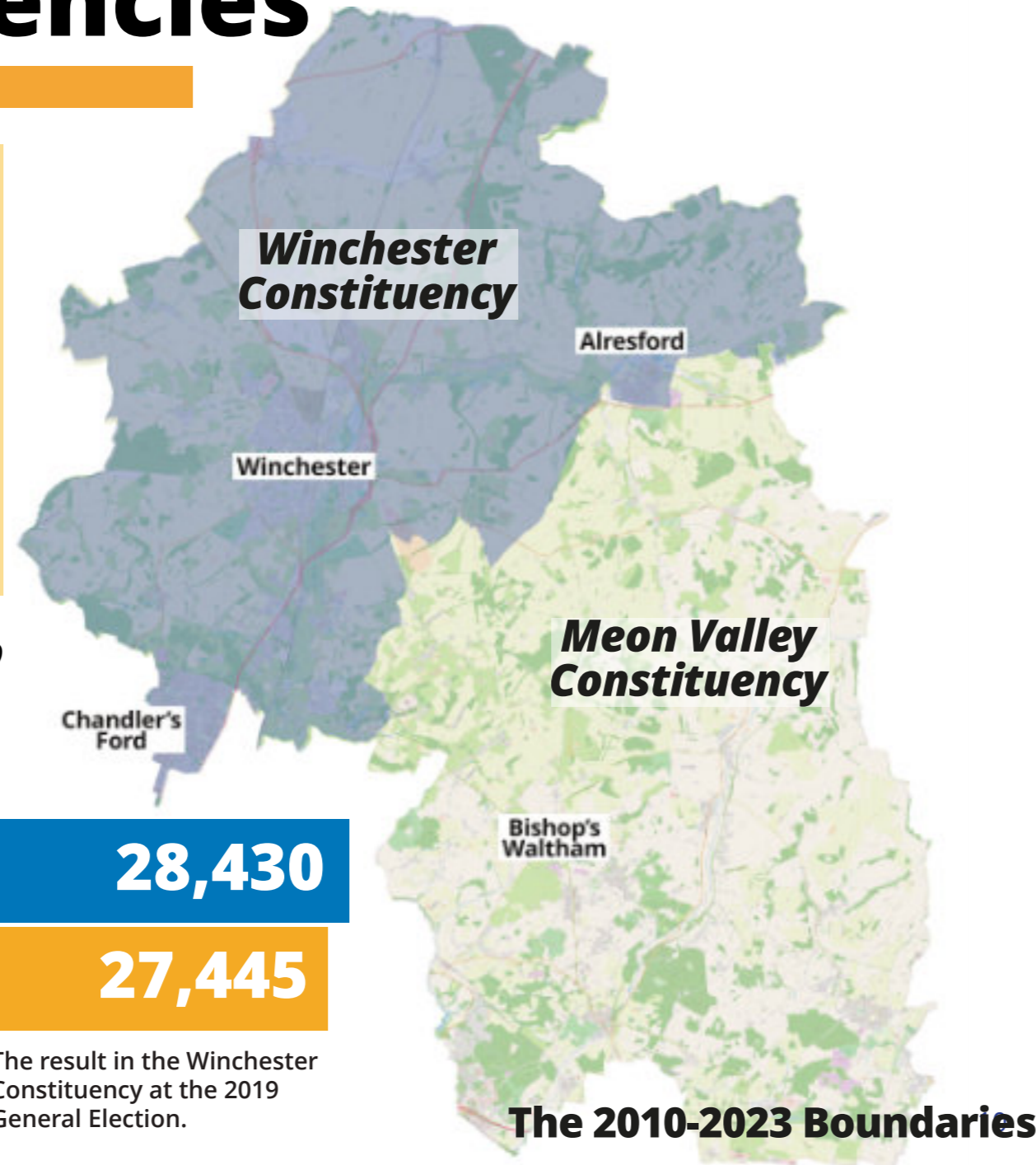
For many years, Winchester was a Conservative seat. **This all changed in 1997, when Mark Oaten won the seat for the Liberal Democrats**, holding the seat until he stood down in 2010.

CON 28,430

LIB DEMS 27,445

LAB 2,723

The result in the Winchester Constituency at the 2019 General Election.



The Winchester area is of national importance to the Liberal Democrats

Since 2010, Conservative Steve Brine has held the seat - with reduced majorities in successive elections since 2015. Starting at 17,000 in 2015, down to 10,000 in 2017, **and to just 985 in 2019!**

It is also worth noting that Winchester voted 58.9% Remain in the Referendum of 2016.

Danny Chambers is Winchester's dedicated Parliamentary Candidate. Residing in the village of Shawford, just south of Winchester, Danny brings a unique perspective as an accomplished equine and small animal vet.

He serves on the Council of the Royal College of Veterinary Surgeons and holds a significant role as a Trustee of a prominent Mental Health Charity.

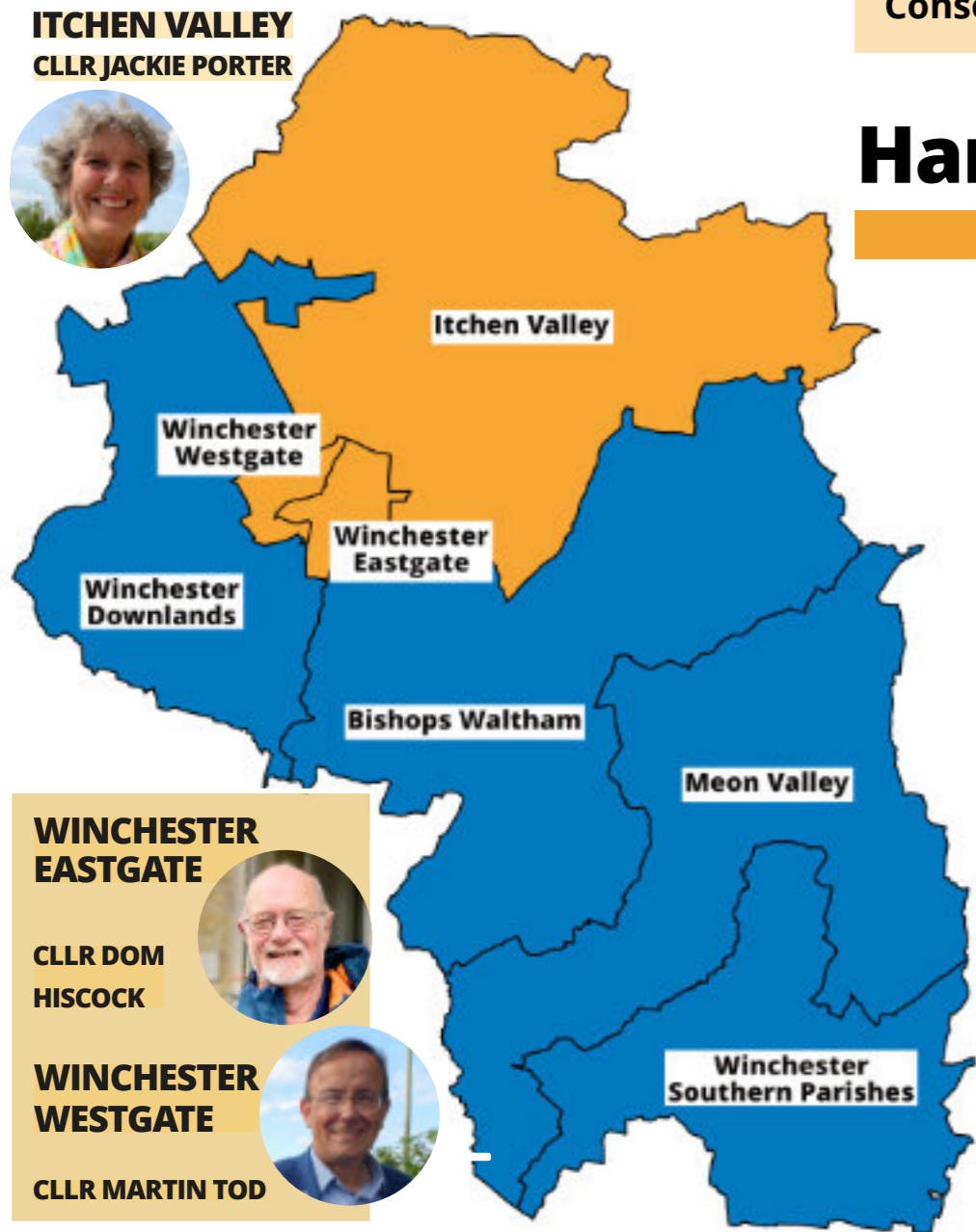
With a proven track record of driving change, Danny has spearheaded impactful national campaigns addressing critical matters such as mental health and animal welfare.



Boundary Commission changes take effect from **Autumn 2023**. The District will be split between three constituencies: Winchester, Hamble Valley, and Fareham & Waterlooville.

Local Politics

ITCHEN VALLEY
CLLR JACKIE PORTER



WINCHESTER EASTGATE

CLLR DOM HISCOCK



WINCHESTER WESTGATE

CLLR MARTIN TOD



There are two local government administrative bodies within the area of our local party:

Lib Dem-controlled Winchester City Council and Conservative-run Hampshire County Council.

Hampshire County Council

Our District is part of the larger administrative area of Hampshire County Council which has responsibility for: children's services including schools; fire and public safety; highways management; libraries; public health; social care; and many more services.

The Conservative Party has always had, and still has, a hefty majority on Hampshire County Council. This is, however, something we are working very hard to change – with your help and support.

There are 78 divisions in the County, of which there are seven County divisions covering Winchester District.

There are 3 Lib Dem County Councillors in our local area (pictured left): Westgate (Cllr Martin Tod), Eastgate (Cllr Dom Hiscock) and Itchen Valley (Cllr Jackie Porter).

There are also 2 Lib Dem County Councillors in neighbouring Chandler's Ford, Chandler's Ford (Cllr Tim Groves), Eastleigh South (Wayne Irish).

Winchester City Council

Winchester District is the area administered by Winchester City Council which has responsibility for planning, housing, waste collection, council tax and business rates collection, leisure services, tourism, benefits administration and many more services.

Winchester District has 16 wards with each ward represented by either two or three councillors. Councillors are elected for four years. Elections to Winchester City Council take place three out of every four years with a third of the City Council up for election each of those years (16 seats). In the fourth year, Hampshire County Council elections take place.

The current make up of Winchester City Council (Summer 2023) is:
30 Lib Dem councillors, 12 Conservative councillors, 2 Green councillors, 1 Independent councillor.



Want to know more?

WINCHESTER: A POLITICAL HISTORY OF INTRIGUE & TURMOIL



For almost the entirety of the 20th century, Winchester had a Conservative MP (apart from the election of George Jeger for Labour in 1945). It wasn't until 1997 that Mark Oaten took the seat for the Lib Dems. Mark Oaten's success had followed a period of turmoil for the Conservatives.

John Browne held the seat in the 1979, 1983 and 1987 elections, but was then embroiled in a dispute about his Parliamentary expenses. In 1992 John Browne stood as an Independent Conservative candidate, as he refused to submit his name for re-selection by the Conservative Party, and lost his seat to Conservative MP Gerry Malone.

In the pivotal 1997 election, Mark Oaten was declared to have won Winchester by two votes, following many recounts. However, he was unseated on an electoral petition on 6 October 1997 when the High Court held that 54 votes declared void for want of the official mark would have changed the

result if counted. The subsequent by-election on 20 November 1997 resulted in a clear win by Oaten – his majority was 21,556 over second-placed Gerry Malone. Many voters clearly resented being asked to vote again!

Mark Oaten comfortably held the seat in 2001 and 2005, and was the Liberal Democrat Home Affairs Spokesman from June 2003 to January 2006. However, a scandal published in the News of the World about his private life led to him resigning from the front bench in 2006 and standing down at the 2010 election when Steve Brine took the seat for the Conservatives, beating Lib Dem Martin Tod by 3084 votes.



In 2015, Steve Brine increased his majority to 16,914, beating local councillor Jackie Porter. Since then, however, his majority has been significantly reduced – to 9,999 in 2017 against Jackie Porter again, and in 2019 new candidate Paula Ferguson produced one of the country's tightest results - losing by just 985 votes.

In 2021, Danny Chambers (see page 14), a local vet and campaigner for mental health support and animal welfare, was selected as the Winchester Lib Dems' Parliamentary Candidate for the next General Election.



WINCHESTER CITY COUNCIL: WHEN, WHAT & WHY

The current district boundaries for Winchester City Council were set on 1 April 1974 when the City of Winchester was merged with the former Droxford Rural District and part of the former Winchester Rural District council area.

The leadership of the City Council has varied with Conservative or Liberal control mixed with periods of no overall control. The Lib Dems won the Council in 1995 and held it for 9 years, until June 2004 when they lost overall control of the council to no overall control. The Conservatives gained control in the 2006 election (after the scandal involving Mark Oaten).

In 2010, however, the Lib Dems gained five seats which gave them an overall majority of one seat. Control was again lost, though, in 2011. A period of Conservative control followed, during which time they lost control

of the City finances and left a £19m hole in the Council budget.

In the highly successful 2019 elections, the Lib Dems secured a majority of 9 seats and were once again in control. The Lib Dems also fared very well in the 2019 European elections.

In 2020, the local elections were postponed due to the Covid 19 pandemic. As a result, they took place in May 2021 alongside the County Council and Police and Crime Commissioner elections. The Lib Dems retained control of the City Council. In 2022 all our incumbents were returned with significantly increased majorities.

The May 2023 Local Elections was an even better year for the Lib Dems with all seats held and two gains!



Our Lib Dem Winchester City Councillors

 Cllr Sudhakar Achwal Whiteley & Shedfield	 Cllr Nathan Eve St Bartholomew	 Cllr Mark Reach St Michael
 Cllr Vivian Achwal Whiteley & Shedfield	 Cllr Russell Gordon-Smith Alresford & Itchen Valley	 Cllr Jane Rutter The Worthys
 Cllr James Batho St Barnabas	 Cllr Hannah Greenberg Colden Common & Twyford	 Cllr Jamie Scott St Luke
 Cllr Kathleen Becker St Bartholomew	 Cllr Brian Laming Badger Farm & Oliver's Battery	 Cllr Anne Small Whiteley & Shedfield
 Cllr Adrian Brophy Badger Farm & Oliver's Battery	 Cllr Kelsie Learney St Barnabas	 Cllr Lucille Thompson St Paul
 Cllr Angela Clear Southwick & Wickham	 Cllr Jonny Morris St Barnabas	 Cllr John Tippett-Cooper St Bartholomew
 Cllr Chris Chamberlain Southwick & Wickham	 Cllr Jerry Pett Upper Meon Valley	 Cllr Martin Tod St Paul
 Cllr Steve Cramoysan The Worthys	 Cllr Jackie Porter The Worthys	 Cllr Chris Westwood St Paul
 Cllr Neil Cutler Southwick & Wickham	 Cllr Margot Power Alresford & Itchen Valley	 Cllr Jonathan Williams Bishop's Waltham
 Cllr Chris Edwards St Michael	 Cllr George Prest St Michael	 Cllr Charlie Wise St Luke

The Lib Dem Winchester City Council Team



Cllr Angie Clear
Mayor of Winchester

Our Winchester City Council Cabinet Members

Cllr Martin Tod (Chair)
Leader and Cabinet Member for Asset Management

Cllr Neil Cutler (Vice-Chair)
Deputy Leader and Cabinet Member for Finance and Performance

Cllr Kelsie Learney
Cabinet Member for the Climate Emergency

Cllr Lucille Thompson
Cabinet Member for Business and Culture

Cllr Jackie Porter
Cabinet Member for Place and Local Plan

Cllr Chris Westwood
Cabinet Member for Housing

Cllr Kathleen Becker
Cabinet Member for Community and Engagement



MEMBERS AND SUPPORTERS CELEBRATING THE OPENING OF OUR NEW OFFICE IN AUGUST 2023.

Printed by Winchester Liberal Democrats, First Floor, Unit E, Bar End Industrial Estate, Bar End Road, Winchester SO23 9NP. Published & promoted by Y. Riley on behalf of Winchester District Liberal Democrats, both at First Floor, Unit E, Bar End Industrial Estate, Bar End Road, Winchester SO23 9NP.